

There are so many reasons you may be considering a retirement community. If they include seeking a lifestyle free from the upkeep and expense of a house with the added peace of mind that a complete retirement community provides, then our Independent Living Apartments are an excellent option for you. You can participate in a wide variety of programs, meet new people and make lasting friendships while benefiting from the comfort, security, and personal interaction you desire. Our Independent Apartments are available in a variety of sizes and floor plans. With equipped kitchens and spacious living areas you can choose the perfect size for you and your favorite furniture.

Independent Living Includes:

- ✓ One daily dining room meal (main meal)
- ✓ Chapel & Worship services
- ✓ Fitness room/exercise programs
- ✓ Computer lounge
- ✓ All utilities (including phone and cable)
- ✓ Emergency call system
- ✓ Banking services
- ✓ Gardening plots
- ✓ Billiard room
- ✓ Laundry facilities
- ✓ Priority placement in other living options
- ✓ Weekly shopping trips
- ✓ Planned programs
- ✓ Parking
- ✓ Library
- ✓ Maintenance
- ✓ Private dining room
- ✓ Putting green
- ✓ Licensed Dietitian and Licensed Social Worker
- ✓ 24-hour security

Also Available:

- ✓ Additional dining room meals
- ✓ Access to medical professionals and services
- ✓ Beauty salon/barber shop
- ✓ General store
- ✓ Guest room
- ✓ Housekeeping services
- ✓ Laundry services
- ✓ Medical transportation
- ✓ Postal services
- ✓ Scheduled outings

Independent Living Rates:

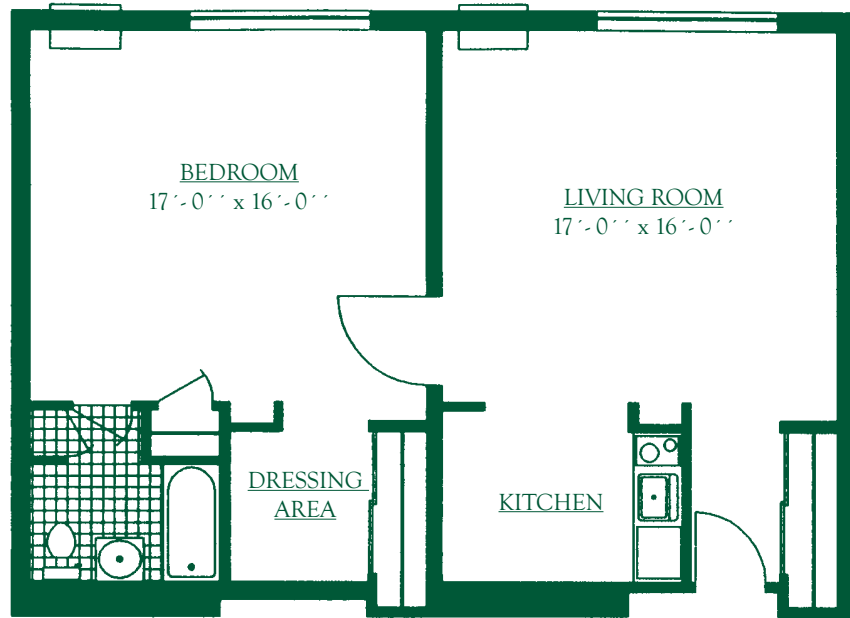
Worthington Christian Village Independent Apartment Living does not require an endowment or entrance fee. One simple monthly rate leaves you in control of your finances.

An application is required for residency with a one time processing fee of \$200/single or \$275/couple due when the application is submitted. A completed application is also required to be placed on the waiting list for future residency.

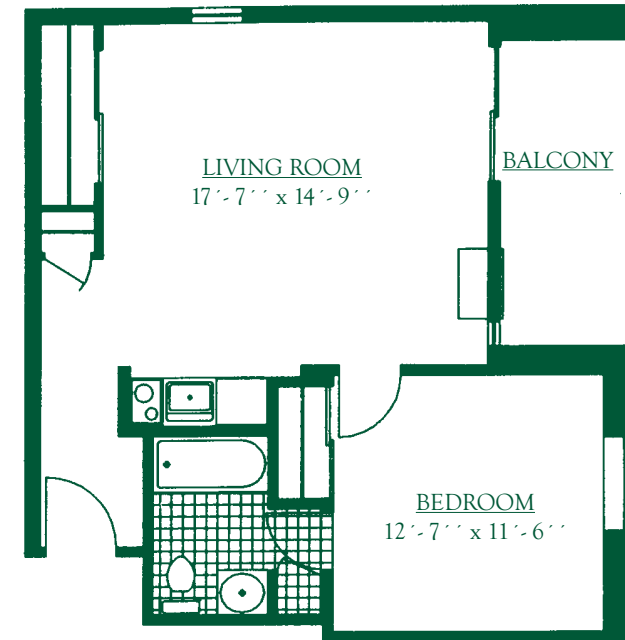
Once you have chosen an apartment, a security deposit equal to one month's rent is due prior to moving in. This fee is refundable less any unpaid charges once the apartment is vacated.

Apartment Style & Size		Single	Couple
Studio	403	\$1,942	
One Bedroom	490 (d)	\$2,269	\$2,586
	490 (f)	\$2,269	\$2,586
	548 (c)	\$2,384	\$2,701
	572 (a)	\$2,449	\$2,766
	572 (b)	\$2,449	\$2,766
	615 (g)	\$2,523	\$2,840
	615 (h)	\$2,392	\$2,709
Two Bedroom	808 (i)	\$2,748	\$3,065
	840 (k)	\$3,061	\$3,378

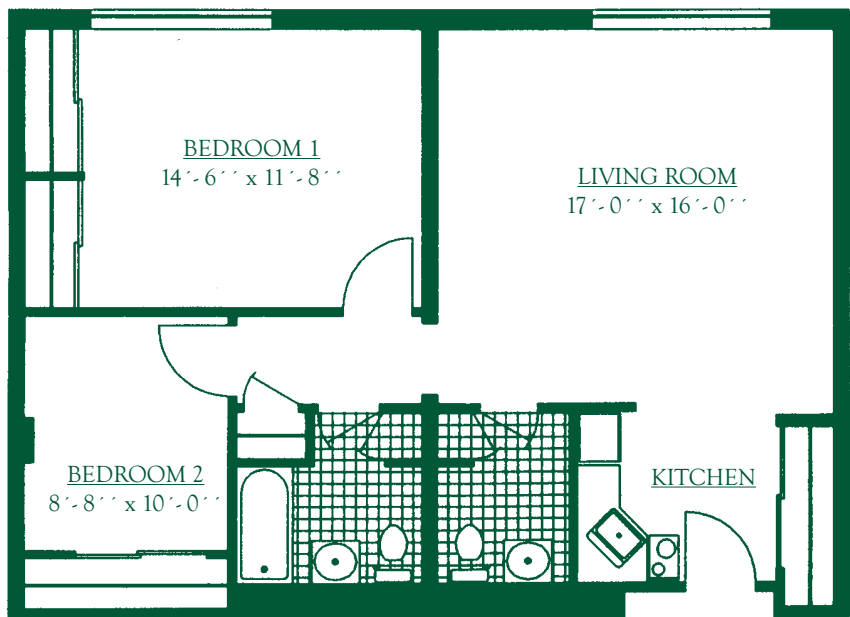
All rates and fees are effective January 1, 2017 and are subject to change.



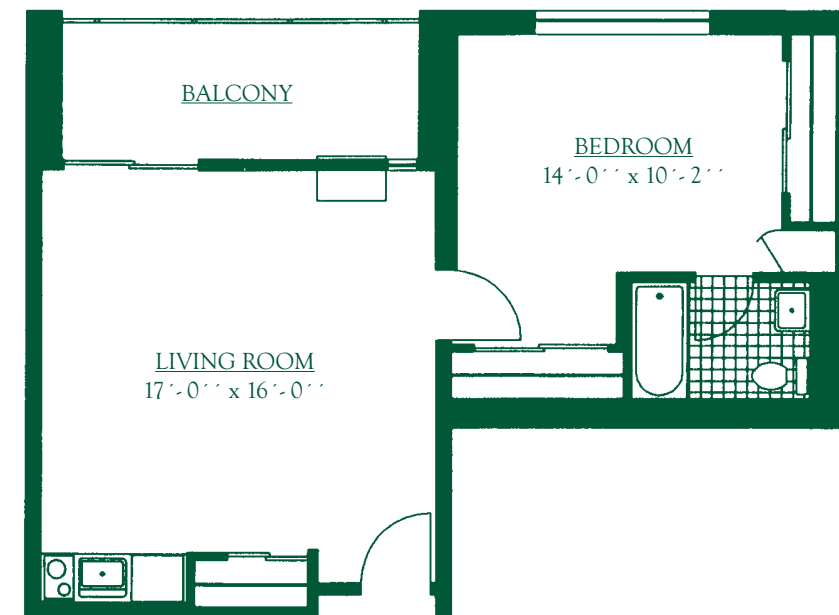
(i) ONE BEDROOM UNIT
0' 1' 2' 4' 8' 808 SQ. FT.



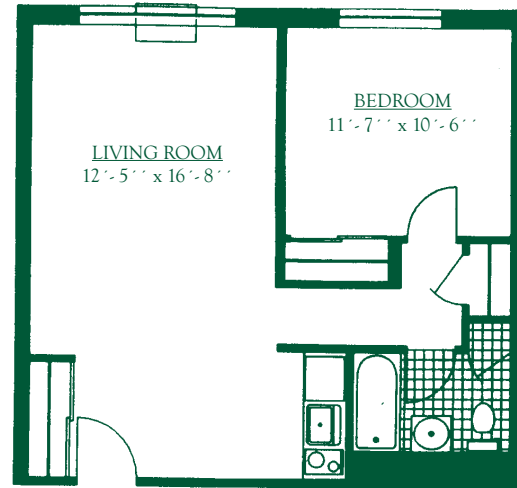
(a) ONE BEDROOM UNIT
0' 1' 2' 4' 8' 572 SQ. FT.



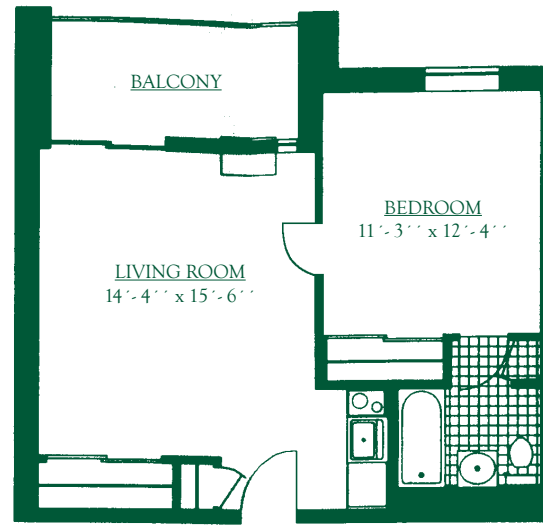
(k) TWO BEDROOM UNIT
0' 1' 2' 4' 8' 840 SQ. FT.



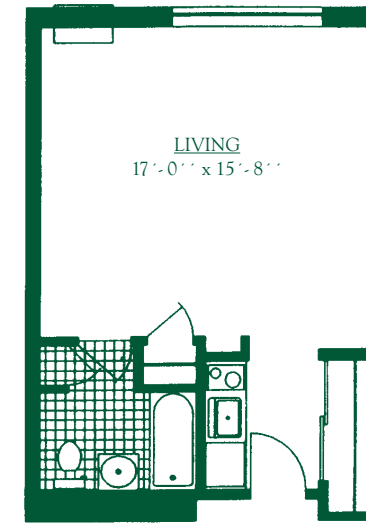
(b) ONE BEDROOM UNIT
0' 1' 2' 4' 8' 572 SQ. FT.



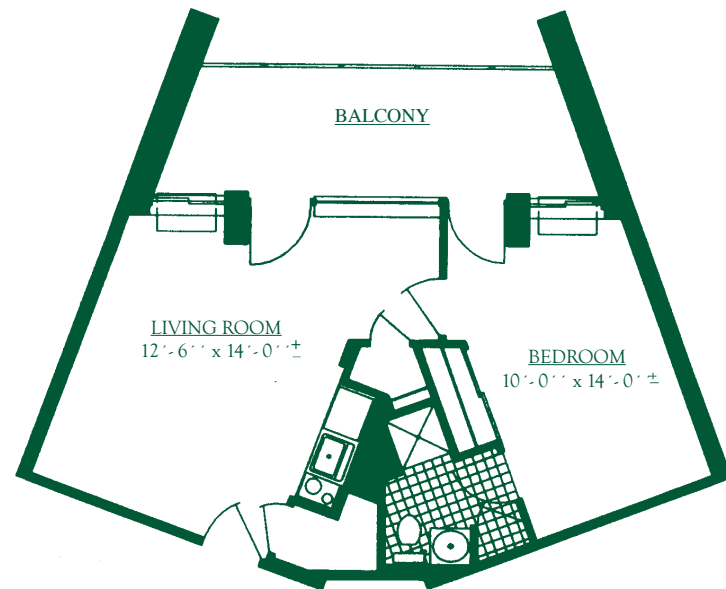
(c) ONE BEDROOM UNIT
0' 1' 2' 4' 8' 548 SQ. FT.



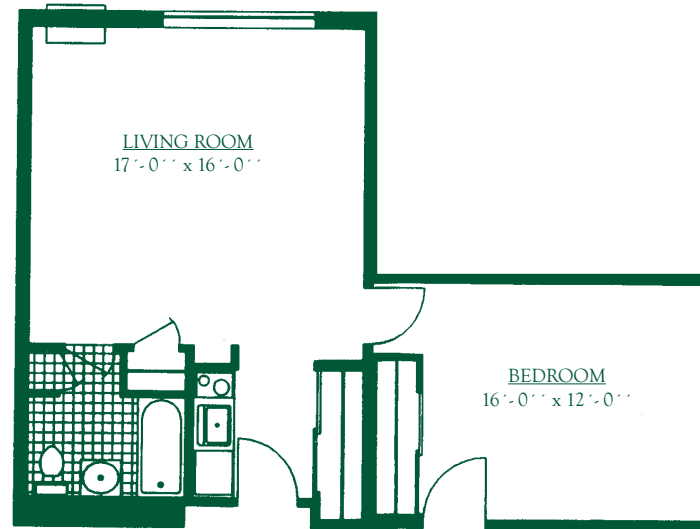
(d) ONE BEDROOM UNIT
0' 1' 2' 4' 8' 490 SQ. FT.



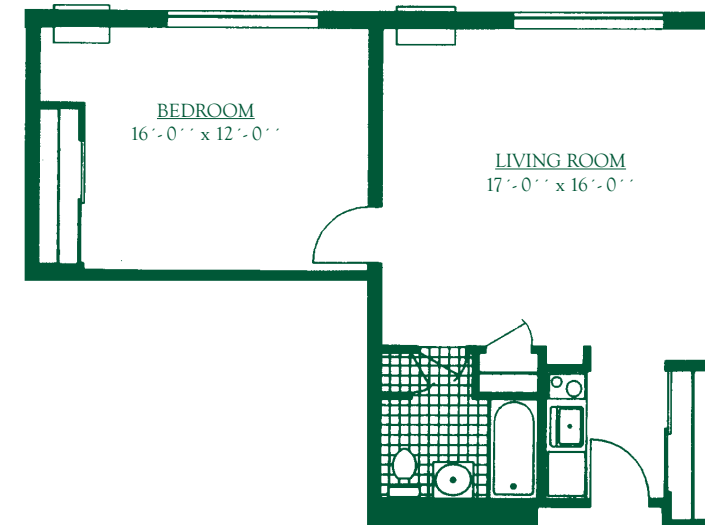
STUDIO
0' 1' 2' 4' 8' 403 SQ. FT.



(f) ONE BEDROOM UNIT
0' 1' 2' 4' 8' 490 SQ. FT.



(h) ONE BEDROOM UNIT
0' 1' 2' 4' 8' 615 SQ. FT.



(g) ONE BEDROOM UNIT
0' 1' 2' 4' 8' 615 SQ. FT.