

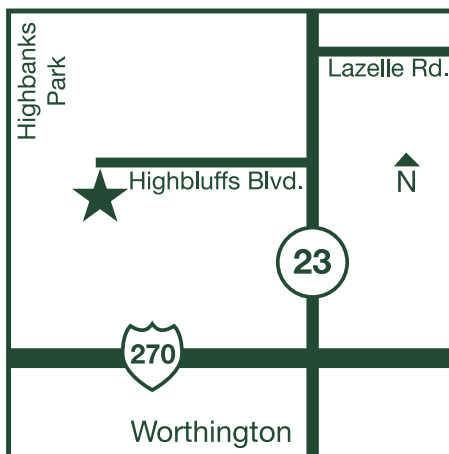
## Our Mission/Map

Our purpose at Worthington Christian Village is to offer a total ministry to the aging of Central Ohio; meeting their spiritual, physical, emotional and social needs. Our goal is to provide an attractive and comfortable living environment; to promote spiritual growth, physical well being, heartfelt satisfaction, social awareness and a feeling of security. Our aim is to produce an atmosphere of caring and sharing in all activities conducive to self-worth supporting the highest quality of life.

A not-for-profit organization, Worthington Christian Village is a ministry of the Church of Christ/Christian Churches. The Village has been known for caring and Christian community since 1985.

Nestled up against Highbanks Metropolitan Park, The Village campus is located on more than 12 beautifully landscaped acres just west of N. High Street (Route 23) one mile north of the I-270 outerbelt. Come visit us today and experience for yourself all we have to offer!

## Map



Worthington Christian Village is an equal housing opportunity and does not discriminate on the basis of race, religion, age or qualified handicap.

165 Highbluffs Blvd., Columbus, OH 43235 (614) 846-6076 [www.wcv.org](http://www.wcv.org)

# Independent Cottages at The Village

A great alternative to purchasing a condo, our Independent Living Cottages offer residents the freedom and privacy of their own house, the added comfort of a secure environment, all the benefits of a social lifestyle, and future access to higher levels of medical care.

Our 24 colonial-style homes are available in three floor plans. Each style includes two bedrooms, two full baths, a spacious kitchen, dining area, great room, utility room, four-season solarium, outdoor patio and an attached single car garage.

## Cottage Living Includes:

- ✓ All inside and outside maintenance
- ✓ All appliances
- ✓ Landscaping and yard care
- ✓ Property taxes
- ✓ Insurance on the structure
- ✓ Alarm system and security
- ✓ Emergency call system
- ✓ Priority placement in other living options
- ✓ Refuse services
- ✓ Snow removal
- ✓ Standard and basic cable
- ✓ Village programs
- ✓ Water

## Also Available:

- ✓ Fitness room
- ✓ Beauty salon/barber shop
- ✓ Postal services
- ✓ Dining room meals
- ✓ Computer lounge
- ✓ Banking services
- ✓ General store
- ✓ Scheduled outings
- ✓ Worship services
- ✓ Billiard Room

## Cottage Living Rates:

The accommodations fee listed to the right is due in full before occupancy. The monthly maintenance fee commences upon occupancy.

When a resident leaves a Cottage, the resident or their estate receives a 75 percent refund of the original fee paid after the Cottage has been remarketed.

Cottage Style	Size	Fee
The Mt. Vernon (A Unit)	*1,508 Sq. Ft.	\$203,727
The Monticello (B Unit)	*1,721 Sq. Ft.	\$217,722
The Williamsburg (C Unit)	*1,798 Sq. Ft.	\$227,719
MAINTENANCE FEE -		\$886 PER MONTH

If a resident must move out of the Cottage due to illness or death during the first two years, only \$10,000 per year will be withheld and the remaining amount will be refunded after the Cottage is remarketed.

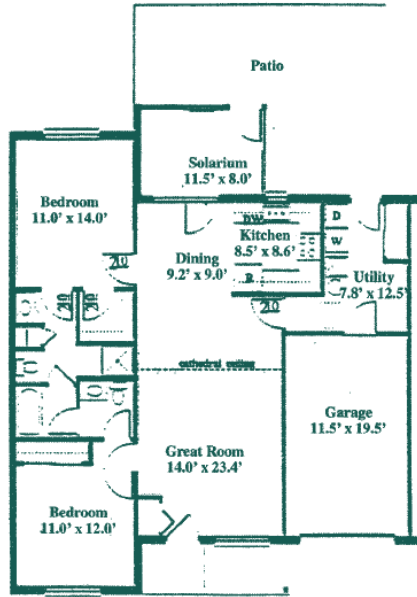
Please note: Due to the limited number of Cottages, a waiting list has been established. In order to be placed on the list, a completed application along with a nonrefundable application processing fee of \$225/single or \$300/couple must be received.

Please turn the page over to view the Cottage Floor Plans.

\*The square footage listed is approximate and was provided by the architects. The square footage will vary from Cottage to Cottage and the number may include measurements from outside wall to outside wall and additional outside areas.

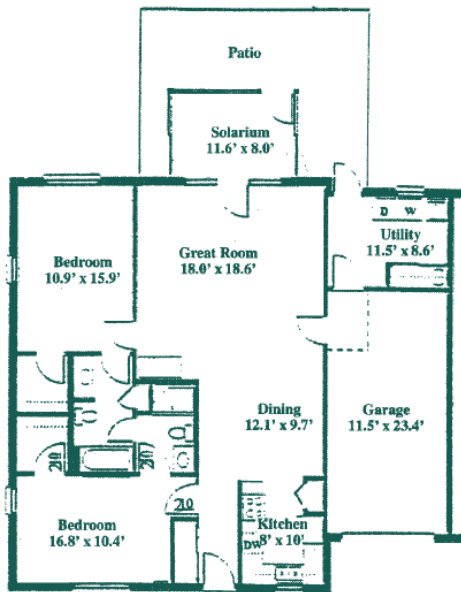
All rates and fees are effective January 1, 2024 and are subject to change.

165 Highbluffs Blvd., Columbus, OH 43235 (614) 846-6076 [www.wcv.org](http://www.wcv.org)



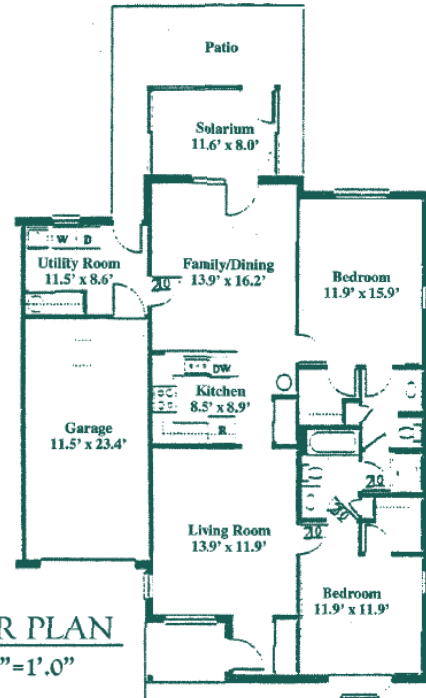
Ⓐ FLOOR PLAN  
Scale: 1/8"=1'.0"

1508 Sq. Ft.



Ⓑ FLOOR PLAN  
Scale: 1/8"=1'.0"

1721 Sq. Ft.



Ⓒ FLOOR PLAN  
Scale: 1/8"=1'.0"

1798 Sq. Ft.

# Assisted Living and Health Care Center

Our Assisted Living Apartments are designed for those who will benefit from 24-hour onsite staff support within the comfort of their favorite furnishings. Assisted Living includes its own nursing staff, lounge, programs, and dining room all in one location. This option offers personalized assistance in activities of daily living ranging from medication management, laundry, housekeeping and meals to bathing and dressing. Residents can also enjoy amenities such as our beauty salon and barber shop, library services, postal services and worship services.

## Assisted Living Includes:

- ✓ 24-hour nursing supervision and assistance
- ✓ All dining room meals, snacks
- ✓ Housekeeping
- ✓ Laundry services
- ✓ Worship services
- ✓ Exercise programs
- ✓ Library services
- ✓ Scheduled outings
- ✓ Personal Care Plan
- ✓ Planned programs
- ✓ Utilities
- ✓ Maintenance
- ✓ Priority placement in other living options
- ✓ Licensed Dietitian and Licensed Social Worker
- ✓ Standard and basic cable television service
- ✓ Banking services
- ✓ 24-hour security

## Also Available:

- ✓ Onsite or visiting professionals and services including: physical, occupational and speech therapists, audiologist, dentist, optometrist, and podiatrist
- ✓ Beauty salon/barber shop
- ✓ General store
- ✓ Medical transportation
- ✓ Postal services

## Assisted Living Rates:

Our daily rates are based on the care plan and type of accommodation selected. The level of care is determined by staff and reevaluated at regular intervals.

A security deposit of \$700 is due prior to moving in. The fee is refundable, less any unpaid charges at move-out. A nonrefundable \$225/single or \$300/couple application processing fee is due when the application is submitted.

Care Plan	One Bedroom	Studio
Level 1	\$224/day	\$190/day
Level 2	\$244/day	\$210/day
Level 3	\$263/day	\$230/day

## Health Care Center

Our licensed, state-certified Health Care Center was created to provide residents in our Independent and Assisted Living with onsite continuing care. Members of the outside community also are welcome to experience the excellent care and services our qualified staff provide around the clock.

## Health Care Center Rates:

Our daily comprehensive rates include personal care and attention 24 hours a day with intermediate and skilled nursing services, meals, linens, housekeeping, life-enriching social, educational, spiritual and cultural programs and scheduled trips. An onsite rehabilitative therapy team of physical, occupational and speech therapists, visiting physicians and other medical professionals are also available for Health Center residents. We are a Medicare and Medicaid-certified Health Care Center.

Semi-Private	Private
\$306/day	\$345/day

All rates and fees are effective January 1, 2024 and are subject to change.

165 Highbluffs Blvd., Columbus, OH 43235 (614) 846-6076 [www.wcv.org](http://www.wcv.org)

# Independent Living at The Village

There are so many reasons you may be considering a retirement community. If they include seeking a lifestyle free from the upkeep and expense of a house with the added peace of mind that a complete retirement community provides, then our Independent Living Apartments are an excellent option for you. You can participate in a wide variety of programs, meet new people and make lasting friendships while benefiting from the comfort, security, and personal interaction you desire. Our Independent Apartments are available in a variety of sizes and floor plans. With equipped kitchens and spacious living areas you can choose the perfect size for you and your favorite furniture.

## Independent Living Includes:

- ✓ One daily dining room meal (main meal)
- ✓ Chapel & Worship services
- ✓ Fitness room/exercise programs
- ✓ Computer lounge
- ✓ All utilities (including phone and cable)
- ✓ Emergency call system
- ✓ Banking services
- ✓ Gardening plots
- ✓ Billiard room
- ✓ Laundry facilities
- ✓ Priority placement in other living options
- ✓ Weekly shopping trips
- ✓ Planned programs
- ✓ Parking
- ✓ Library
- ✓ Maintenance
- ✓ Private dining room
- ✓ Putting green
- ✓ Licensed Dietitian and Licensed Social Worker
- ✓ 24-hour security

## Also Available:

- ✓ Additional dining room meals
- ✓ Access to medical professionals and services
- ✓ Beauty salon/barber shop
- ✓ General store
- ✓ Guest room
- ✓ Housekeeping services
- ✓ Laundry services
- ✓ Medical transportation
- ✓ Postal services
- ✓ Scheduled outings

## Independent Living Rates:

Worthington Christian Village Independent Apartment Living does not require an endowment or entrance fee. One simple monthly rate leaves you in control of your finances.

An application is required for residency with a one time nonrefundable processing fee of \$225/single or \$300/couple due when the application is submitted. A completed application is also required to be placed on the waiting list for future residency.

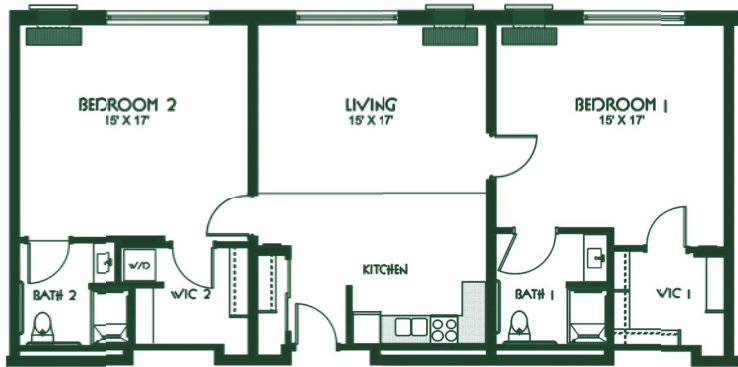
Once you have chosen an apartment, a security deposit equal to one month's rent is due prior to moving in. This fee is refundable less any unpaid charges once the apartment is vacated.

Apartment Style & Size		Single	Couple
Studio	403 (e)	\$2,344	\$2,719
One Bedroom	490 (d)	\$2,742	\$3,117
	490 (f)	\$2,742	\$3,117
	548 (c)	\$2,880	\$3,255
	572 (a)	\$2,960	\$3,335
	572 (b)	\$2,960	\$3,335
	615 (g)	\$3,049	\$3,424
Two Bedroom	808 (i)	\$3,323	\$3,698
	828 (j)	\$4,008	\$4,383
	840 (k)	\$3,569	\$3,944
	1240 (l)	\$4,509	\$4,884

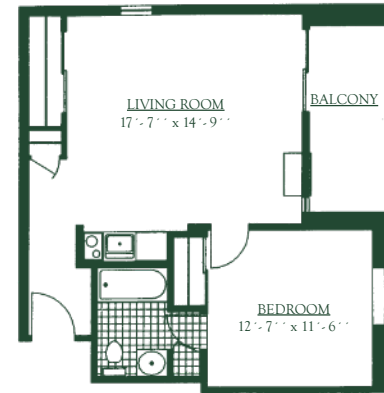
All rates and fees are effective January 1, 2024 and are subject to change.

165 Highbluffs Blvd., Columbus, OH 43235 (614) 846-6076 [www.wcv.org](http://www.wcv.org)

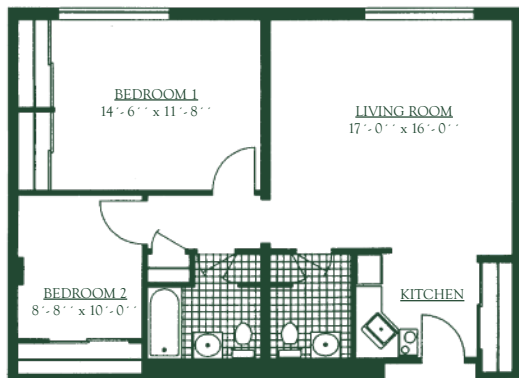
## Floor Plans



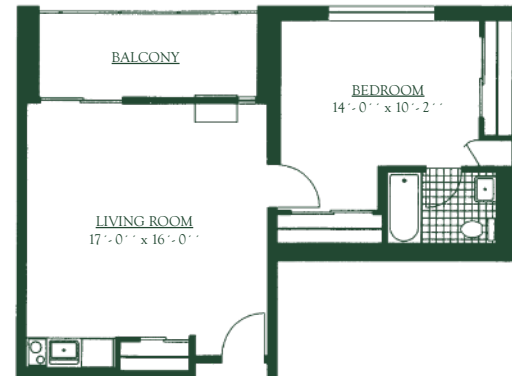
① TWO BEDROOM UNIT  
 0' 1' 2' 4' 8' 1240 SQ. FT.



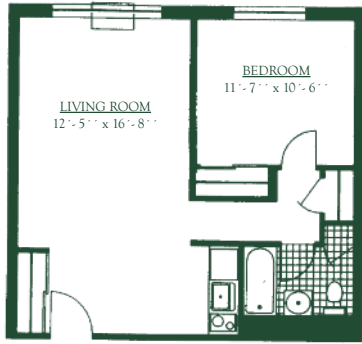
Ⓐ ONE BEDROOM UNIT  
 0' 1' 2' 4' 8' 572 SQ. FT.



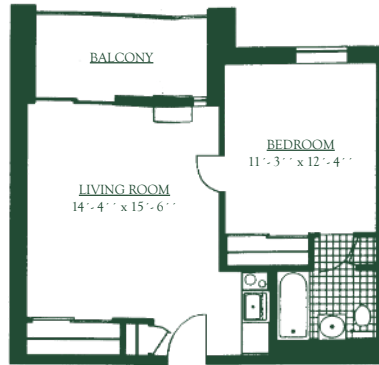
Ⓚ TWO BEDROOM UNIT  
 0' 1' 2' 4' 8' 840 SQ. FT.



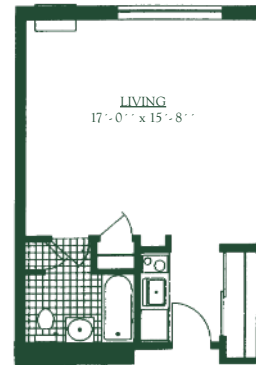
Ⓑ ONE BEDROOM UNIT  
 0' 1' 2' 4' 8' 572 SQ. FT.



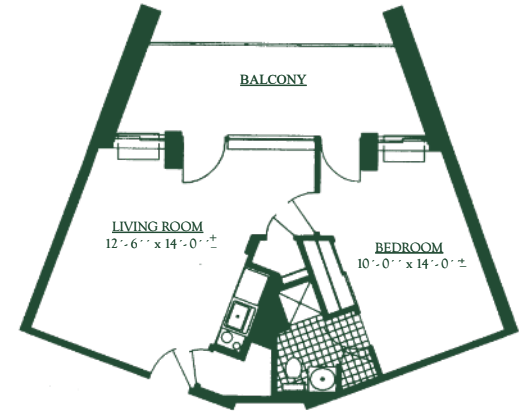
c ONE BEDROOM UNIT  
0' 1' 2' 4' 8' 548 SQ. FT.



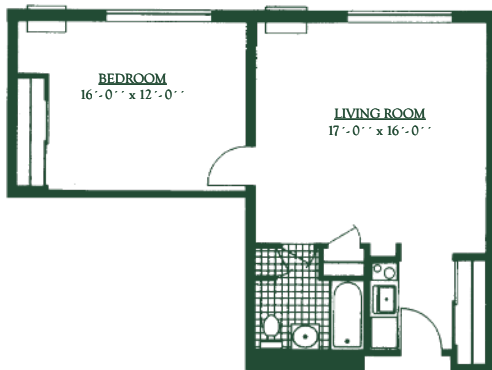
d ONE BEDROOM UNIT  
0' 1' 2' 4' 8' 490 SQ. FT.



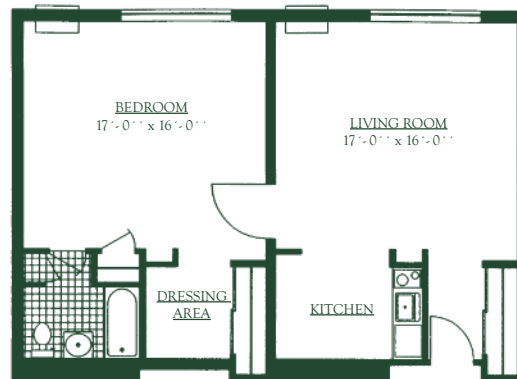
e STUDIO  
0' 1' 2' 4' 8' 403 SQ. FT.



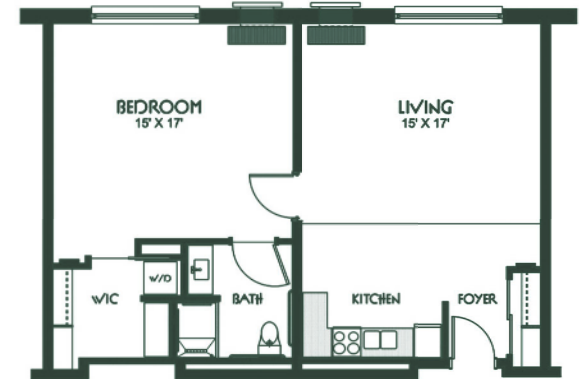
f ONE BEDROOM UNIT  
0' 1' 2' 4' 8' 490 SQ. FT.



g ONE BEDROOM UNIT  
0' 1' 2' 4' 8' 615 SQ. FT.



h ONE BEDROOM UNIT  
0' 1' 2' 4' 8' 808 SQ. FT.



i ONE BEDROOM UNIT  
0' 1' 2' 4' 8' 828 SQ. FT.