

Assisted Living

The accommodations in Assisted Living are designed for those who will benefit from 24-hour, on-site staff support within the comfort of their favorite furnishings.

Assisted living amenities consist of private, generously-sized apartments, a full time activities director, and compassionate care by our team of professionals.

Chef-prepared meals are served three times per day in the dedicated dining room by our in-house staff. Residents are provided personalized assistance with their daily activities from medication management, bathing and dressing, to chores such as laundry and housekeeping. Each apartment includes a private, full bathroom, ample closet space, individually controlled temperature settings, and a 24-hour emergency call system.

Assisted Living Includes:

- ◇ 24-hour nursing supervision and assistance
- ◇ All dining room meals, snacks
- ◇ Housekeeping & Laundry Services
- ◇ Personalized Care Plan
- ◇ Worship Services
- ◇ Exercise Programs
- ◇ Library & Banking Services
- ◇ Scheduled Outings
- ◇ Dietitian & Social Services
- ◇ Maintenance & 24-hour security
- ◇ Basic cable television
- ◇ Priority placement in other living options
- ◇ Lounge area with balcony

Also Available:

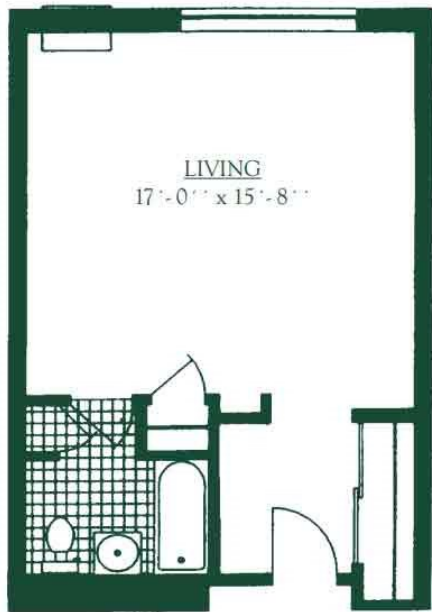
- ◇ On-site or visiting professionals and services including: physical, occupational, and speech therapists, audiologist, dentist, optometrist, and podiatrist
- ◇ Landline Telephone
- ◇ Beauty salon/barber shop
- ◇ Medical Transportation
- ◇ General Store
- ◇ Postal Services

Care Plan	One Bedroom	Studio
Level 1	\$224/day	\$190/day
Level 2	\$244/day	\$210/day
Level 3	\$263/day	\$230/day

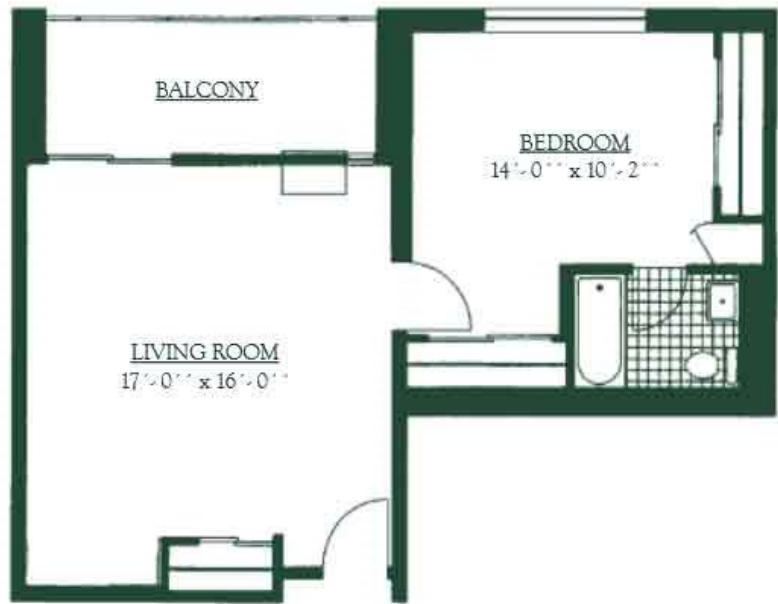
Call, e-mail wcvmarketing@wcv.org, or visit our website for more information or to schedule a tour!



165 Highbluffs Blvd., Columbus, OH 43235
(614) 846-6076 • www.wcv.org



Studio Apartment
Approx. 403 sq. ft.



1- Bedroom Apartment
Approx. 572 sq. ft.

An Assisted Living Resident must be able to:

- ◇ Transfer from chair to bed with the assistance of only one staff member.
- ◇ Dress appropriately for public settings. Staff are able to assist with dressing.
- ◇ Eat without assistance and behave appropriately in the dining area.
- ◇ Communicate effectively via speech, writing, or other form of communication
- ◇ Be assisted to the bathroom with the help of only one staff member. Incontinence products are allowed.
- ◇ Respond to cueing and behave in a socially acceptable way.

Worthington Christian Village Assisted Living is not a secured unit.

Our daily rates are based on the level of care and type of accommodation selected. The level of care is determined by staff and reevaluated at regular intervals. A security deposit of \$700 is due prior to move-in. The security deposit is refundable based on condition of room, outstanding charges, etc. A non-refundable \$225/single or \$300/couple application processing fee is due when an application for residency is submitted.